
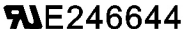


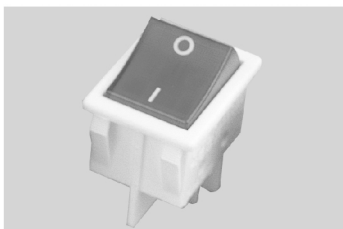


Specifications:

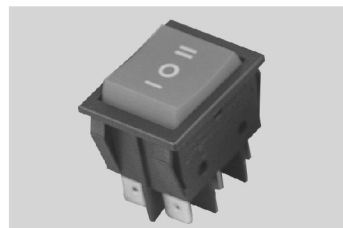
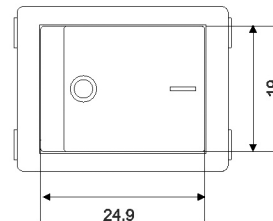
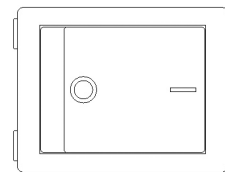
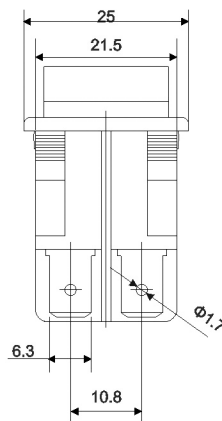
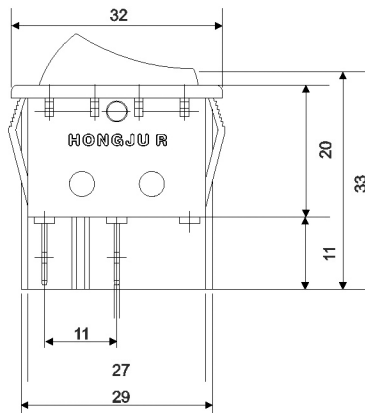
1. Rating: 16A 125VAC/ 250VAC  
16(4)A 250VAC T85 (1E4)  
2. Contact Resistance: 20mΩ (max.)
3. Insulation Resistance: DC 500V 100MΩ (min.)
4. Dielectric Strength: 1500VAC/1 Minute



R210-C5N-BB



R210-C5L-WR



R230-C6N-BR



R210-R7N-BB(R)

