

**MATERIAL:**

Body:Nylon66,UL rated:94V-2 min

Actuator:Nylon66,UL rated:94V-2 min

Terminal:Brass,silver or tin plated

Rating: 10A 125V AC (UL CUL ) 6A 250V AC (UL CUL VDE CB) 

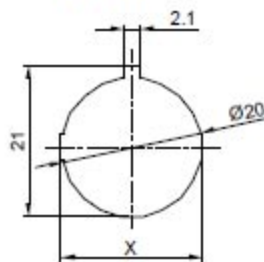
Contact Resistance: 50m Ω MAX.

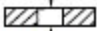
Insulation Resistance: DC 500V 100M Ω MIN.

Dielectric Strength: AC1500V 1 minute

Electrical life: 10,000 cycles

Operating Temperature: 0°C ~85°C

**CUT-OUT**

	X
0.75~1.25	20.2
1.25~2.00	20.4
2.00~3.00	20.6

SWITCHING CIRCUIT



x	0	1	2	3	4	5
Marking	None	