
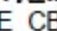

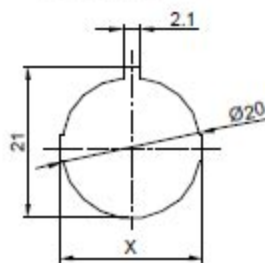
**MATERIAL:**

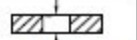
Body: Nylon66, UL rated: 94V-2 min

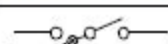
Actuator: PC, UL rated: 94V-2 min

Terminal: Brass, silver or tin plated

Rating: 10A 125V AC (UL CUL)  
 6A 250V AC (UL CUL VDE CB) 
 Contact Resistance: 50m Ω MAX.
 Insulation Resistance: DC 500V 100M Ω MIN.
 Dielectric Strength: AC1500V 1 minute
 Electrical life: 10,000 cycles
 Operating Temperature: 0°C ~ 85°C

CUT-OUT

	X
0.75~1.25	20.2
1.25~2.00	20.4
2.00~3.00	20.6

SWITCHING CIRCUIT

x	0	1	2	3	4	5
Marking	None	